

Exercise 12 - "Cool"

The piece begins with everyone playing the following jazz riff on any note of the chord for each measure at a laid-back, slow tempo of 60 or slower.

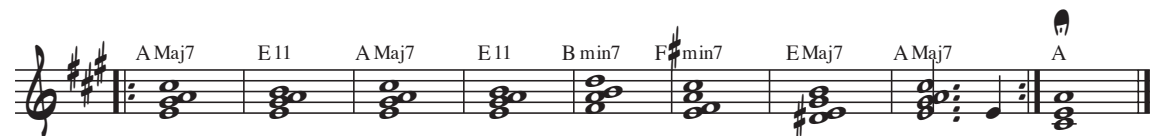


Strive for a smooth yet varying melodic line in your chord tone choices. After one time through, players take turns improvising on the given chords or using the G pentatonic scale (concert pitch). As the background group becomes more comfortable, occasional imitations of riffs played by the soloist may be interjected. Players may "lay out" and re-enter as needed. The bass line may be played as is or ad lib. After everyone has soloed, the group plays the chords one last time through, and ends on the final bar.

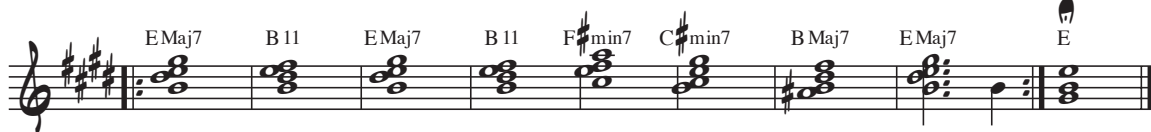
C:



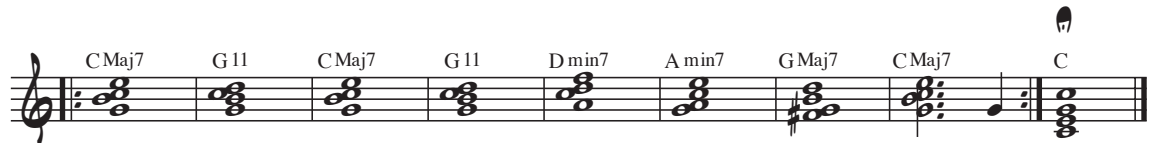
B♭:



E♭:



F:



Bass line (or improvised on chords):

